

CERTIFICATE OF LOCATION OF GOVERNMENT CORNER

NORTH QUARTER Corner of Section 29, Township 107, Range 43, _____ P.M.
 STATE OF MINNESOTA, County of MURRAY

At the corner location shown on the sketch:

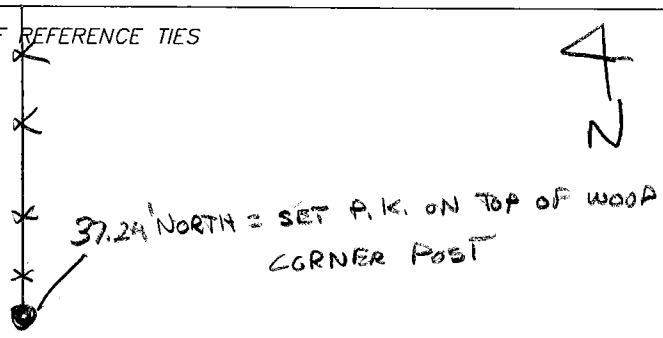
On 2/20/07 found a FIP RLS 12967 DOWN 1.0' BELOW SURFACE IN CENTER
LINE ROAD, IN LINE WITH FENCE N.

left monument as found, lowered monument, removed monument (explain)

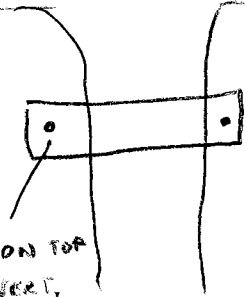
On _____ placed a _____
DATE

Date 2/20/07
 Crew Jim / Mike

SKETCH OF REFERENCE TIES



141TH ST. GRAVEL



41.23' SOUTHWEST = SET P.K. NAIL ON TOP W. SIDE OF CULVERT.
29.82' SOUTH = SET P.K. NAIL ON TOP E. SIDE OF CULVERT

Statement of evidence relative to this corner location is on back of page.

I hereby certify that this document and the data contained herein was prepared by me or under my direct supervision.

SIGNATURE

Registration No. 40853

Land Surveyor, Professional Engineer
 County Surveyor, County Engineer

OFFICE OF THE COUNTY RECORDER
 County of _____

I hereby certify that this document was filed in the Co. Recorders office at _____ .M. on the _____ day of _____ A.D., 20____

County Recorder _____
 By _____, Deputy
 DOCUMENT NO. _____